



**WORLD'S BEST
ALLOY BULLBARS**

**Strongest Built
Australian Made
Lifetime Warranty**

PN: AWOSZ100SY



Fitting Guide & Owners Manual

SUZUKI JIMNY 11/18 ON

Winch Mounting Bracket only
VEHICLE FRONTAL PROTECTION SYSTEM (VFPS)
FOR AIR BAG & ADR COMPLIANT VEHICLES



Index

Page 3

ECB's Benefits

Product Care

Pages 4-5

Product Care

Stage 1 - Vehicle preparation

Stage 2 - Grille removal

Stage 3 - Wind deflector removal

Pages 6-7

Stage 4 - Release guard liner

Stage 5 - Release top of bumper

Stage 6 - Release under side of bumper

Stage 7 - Remove air deflector

Stages 8 to 9 - Chassis Preparation

Pages 8-9

Stage 10 to 11 - Chassis Preparation continued

Stage 12 - Steel mounting bracket fitment

Stage 13 - Steel mounting bracket fitment

Stage 14 - Number plate holder installation

Stage 15 - Winch installation

Pages 10-11

Stage 16 - Name plate removal

Stage 17 - Bumper cut

Stage 18 - Bumper refitment

Final Checks & Installation Kit

Pages 12-13

Finished Product

Warranty Registration

Pages 14-15

Warranty information

ECB's Benefits

Built to Perform - Not to a Price

ECB are proud to claim that their channels are not jigsaw puzzles that are bolted together, or even multiple sections welded together. Where any welding is required, it is done to the highest standards by qualified welders, not machines.

Anti-Corrosive Nature of Alloy

The composition of ECB's alloy has a very high resistance to corrosion. Rust not only looks unappealing but greatly reduces the strength of the metal. Rust can and will weaken the structural integrity of a steel bullbar effectively rendering it useless over time.

Australian Made

Established in 1971, we utilise decades of experience designing, engineering and building products in Australia to suit Australian conditions. We can ensure the best quality controls and help support the local economy and employ over 90 proud Australians.

Weight Saving Benefits

An ECB alloy bullbar is typically half the weight of a steel bullbar. Unnecessary suspension upgrades are not required. The reduced weight also contributes to increased fuel economy and less wear and tear on tyres, suspension and braking components.

Welds That Work

ECB uses only the strongest welds and welding techniques to ensure every product is as structurally sound as possible. MIG (Metal Inert Gas) welding techniques are employed ensuring the welds are as thick as the thickest section of alloy's being joined together.

Lifetime Warranty

ECB provide a lifetime warranty and consumer guarantee on all of our manufactured products. This guarantee highlights the confidence in our ability and provides complete peace of mind for your purchase for the lifetime you own your vehicle.

Product Care

Polished Products

Being a premium mirror polished finish, regular maintenance will be required to keep that iconic ECB shine. We recommend using our own brand of Aluminium Polish. This formula has been tried and tested and in our opinion is the world's best standard.

Directions: Apply a small quantity of Aluminium Polish to a clean soft cloth and rub the metal surface. The longer the rubbing the brighter the surface becomes. Wipe off Aluminium Polish with clean soft cloth. Also suitable for motorised buffing machines. **Note: There are more specific details on the polish bottle. Please read before use.**

Powdercoated Products

Our powdercoated finishes are very low maintenance. Infact there is actually very little you will ever need to do for this product. Just clean it as you would your car and it will stay looking good as new.

ECB Aluminium Polish

When you're looking for that showroom finish look for your polished automotive products, you can depend on the no compromise quality of East Coast Bullbars Aluminium Polish. This specifically designed product is the best polish available and we guarantee that this \$#!+ works. With over 40 years of manufacturing polished alloy products we have trialed a large range of different polishes on the market and believe without a doubt that nothing beats the finish quality of East Coast Bullbars Aluminium Polish.

East Coast Bullbars Aluminium Polish is excellent for use by hand and is ideal for polished bullbars, nudge bar and stainless steel products. This polish will clean, polish and protect your product from the elements whilst bringing your products back to that showroom finish look.



AWOSZ100SY

Stage 1

- Test drive vehicle to ensure all driver assists are correctly working and to gauge effectiveness. Park on a flat level surface.
- Apply parking brake and lift bonnet.
- Unwrap ECB Protection bar and disconnect mounts. Discard bolts.
- Ensure these instructions are left with the vehicle owner / operator.



Stage 2

- Remove two (2) push/pull clips from bonnet lock panel.
- Pull grille forward to unclip and remove.



Stage 3

- Remove seven (7) push/pull clips from wind deflector behind grille and remove.



Suzuki Jimny 11/18 on

Stage 4

- Remove three (3) push/pull clips and one (1) screws from front of guard liner (per/side).



Stage 5

- Remove four (4) push/pull clips from top of bumper.



Stage 6

- Remove two (2) push/pull clips and three (3) screws from underside of bumper.
- Unplug fog lights and headlight washer line
- Remove bumper.



AWOSZ100SY

Stage 7

- Remove five (5) push/pull clips from air dam behind bumper and remove.



Stage 8

- Enlarge the two holes in the side of the crash can to allow spacer tube to fit.

NOTE: Blow filings clear and treat all exposed metal with a rust inhibitor



Stage 9

- Drill outer lower hole in crash can to 10mm.

NOTE: Blow filings clear and treat all exposed metal with a rust inhibitor.



Suzuki Jimny1 1/18 on

Stage 10

- Using ECB winch mount as a guide place into position and drill three (3) 10mm holes through lower crossmember on vehicle.
- CAUTION keep clear of radiator coolers when drilling.

NOTE: Blow filings clear and treat all exposed metal with a rust inhibitor



Stage 11

- Enlarge front of drilled holes in crossmember to allow spacer tube to fit.

Blow filings clear and treat all exposed metal with a rust inhibitor.



Stage 12

- Fit winch mount with two (2) M10 x 1.5 x 60mm bolts, 30mm tube spacers, flat washers, spring washers and nuts (supplied) in top holes at rear and one (1) M10 x 1.5 x 70mm bolt, flat washers, 30mm tube spacer, 40 x 40 x 6mm washer, spring washers and nut (supplied) in lower hole.

NOTE: 40 x40 x 6mm washer goes at rear of lower bolt.



AWOSZ100SY

Stage 13

- Fit two (2) M10 x 1.75 x 70mm bolt, 43mm tube spacers, flat washers, spring washers and nuts (supplied) in side holes (per/side).
- Align and centralise mount and tighten all bolts.



Stage 14

- Fit name plate holder between fairlead and winch mount.
- Install fairlead to winch mount with manufactures equipment.



Stage 15

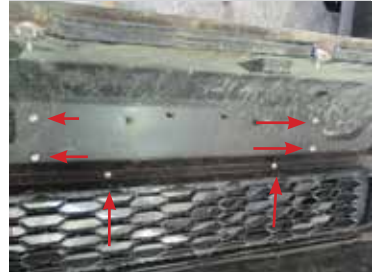
- Fit winch to winch mount with winch manufactures equipment and instructions.



Suzuki Jimny 11/18 on

Stage 16

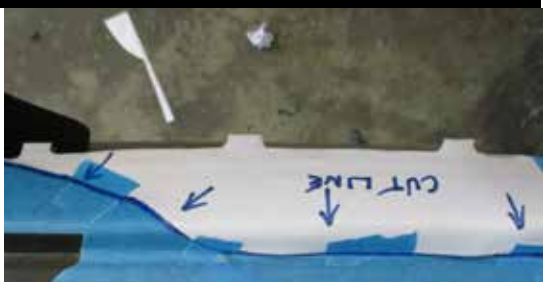
- Remove name plate housing and lower grille from bumper by removing four (4) 8mm head nuts and four (4) phillips head screws.
- Install four (4) M6 x 25 combo bolts (supplied) into holes where name plate cover has been removed. These are for appearance only.



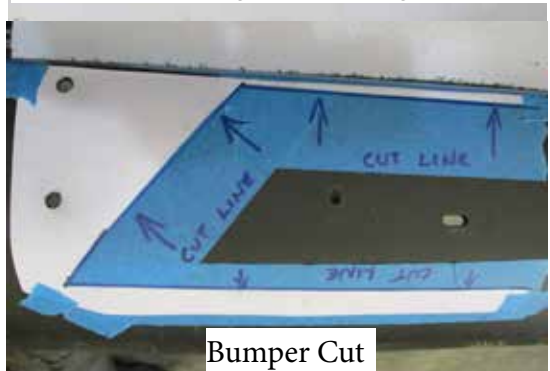
Stage 17

- Remove lower grille from vehicle.
- Mask centre of bumper under lower grille opening.
- Using ECB bumper cut template from instructions, mark bumper. (Template is half of the cut, so mark out and turn over for other side).
- Double check marking before cutting.
- Cut bumper using a jigsaw or similar.

CAUTION: Some printers vary on print out. Check the scale of the template before use. Please call ECB customer service should you require printer settings.



Lower grille opening



Bumper Cut

Stage 18

- Refit bumper using original equipment fasteners.
- Refit upper grille and wind deflector using original equipment fasteners.

NOTE: Two (2) M6 x 16 bolts, flat washers and nuts have been included to install number plate.



Final Checks & Installation Kit

Ensure Number Plate is Clearly Visible

Note: When fitting/refitting the licence plate to the vehicle, ensure there is no obstruction to licence plate vision in accordance with local authorities. If required relocate licence plate to an alternate location.

Further VFPS Notes

- 1. Do not attach VFPS to the vehicle using anchorages not intended for this purpose (e.g. engine mounting bolts).
- 2. Do not use this product for any vehicle make or model, other than those specified by the VFPS manufacturer.
- 3. Do not remove the plaque or label from the VFPS.
- 4. Do not modify the structure of the VFPS in any way.
- 5. No accessory or fitment should project forward of the VFPS forward profile.
- 6. **Ensure these instructions are left with the vehicle owner and/or operator.**

Important Information

Periodically check bolts and nuts for correct tightness, especially if traveling on rough roads.

Installation Kit

1 - Steel winch mounting bracket	14 - M10 flat washers
4 - Tube spacer 43mm x 10NB	7 - M10 spring washers
3 - Tube spacer 30mm x 10NB	7 - M10 nuts
1 - Washer plate 40 x 40 x 6mm	4 - M6 x 25mm combo bolts
1 - Name plate holder	2 - M6 x 16mm bolts
5 - M10 x 1.5 x 70mm bolts	8 - M6 flat washers
2 - M10 x 1.5 x 60mm bolts	6 - M6 nyloc nuts

Finished Product



Warranty Registration

Contact Details

Name: _____

Address: _____

Product: **AWOSZ100SY** _____

Email: _____

Phone: _____

Work Order Number: _____

You can find this on the silver label
of your ECB product.

By submitting this registration you automatically subscribe to ECB's mail outs. You
can unsubscribe at any time.

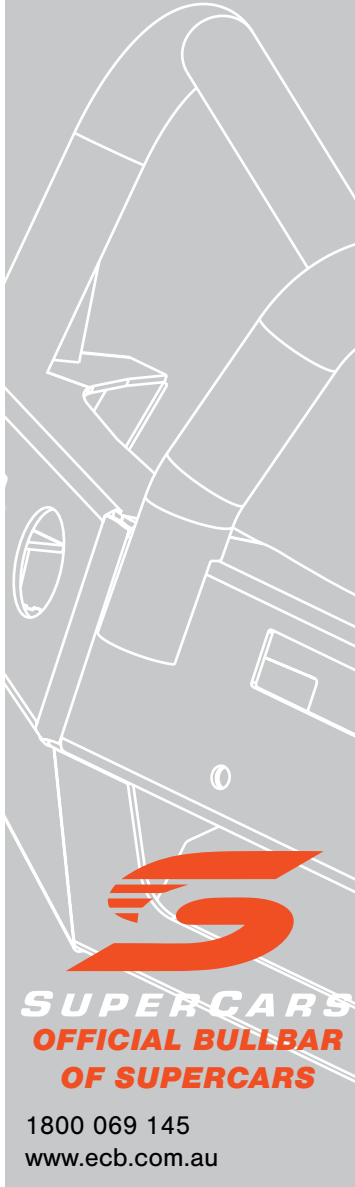
Register Online

For online registration please go online to www.ecb.com.au/warranty-registration
If you have any questions please contact our national office on 1800 069 145 or
www.ecb.com.au.



PN: AWOSZ100SY
Please post to PO Box 122,
Margate QLD 4019

REPLACES: N/A
REVISED: 09.07.20



Strongest Built Australian Made Lifetime Warranty

29 Snook St, Clontarf QLD 4019
PO Box 122, Margate QLD 4019